

# ECOM260CR

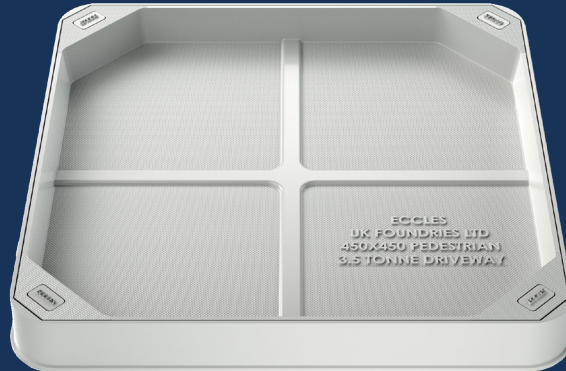
35kN (3.5 tonnes)

## Composite Recessed Access Cover and Frame

**ECOM260CR 450x450x60**

Composite recessed access cover and polypropylene frame suitable for concrete screed.

**MultiFill™**  
60



<b>PRODUCT CODE</b>	ECOM260CR	<b>BASE SIZE</b>	550mm x 550mm
<b>CLEAR OPENING</b>	450mm x 450mm	<b>DEPTH</b>	60mm

## FEATURES

- COMPETITIVE**  
Competitively priced against legacy materials used for the equivalent application.
- ANTI-FATIGUE**  
Our extensively designed and developed top pattern matrix provides a high wearability. Ideal for areas with high pedestrian footfall.
- LOW VIBRATION RATE**  
Our unique composition of material allows for minimal to no vibrations. Ensuring the supporting area and structures are unaffected by the trafficking of the cover.
- HIGH UV RESISTANCE**  
The Unique composition of the eco cover range provides a high UV resistance value, ensuring the product a maintain a high level of aesthetics.
- SILENT ENGINEERING**  
Significantly reduced noise in service in comparison to conventional materials user for similar applications.
- RECYCLABLE**  
Long life asset with high circularity contributing to the reduction in carbon footprint.
- EASY FIT**  
Designed and manufactured for ease of installation and maintenance.
- LIFESPAN**  
Our unique SMC material has been researched and designed to ensure a long lifespan. Utilising some of the most innovate techniques to increase the ECO covers wearability and lifespan.
- LIGHTWEIGHT**  
30 to 40% lighter than materials used for the same application.
- MULTIFILL (INTERNAL)**  
To provide an unobtrusive access that matches the surrounding area. They are ideally suited for internal or external use where a screed or tile infill is required.
- LOCKED 4 SCREWS / RUBBER SEALED**

# ECOM260CR

35kN (3.5 tonnes)

## Composite Recessed Access Cover and Frame

**ECOM260CR 450x450x60**

Composite recessed access cover and polypropylene frame suitable for concrete screed.

**MultiFill™**  
60

### DATA

#### Dimensions

A / Base Size: 550mm x 550mm

B / Clear Opening: 450mm x 450mm

C / Depth: 60mm

#### Materials

Composite

#### Finish

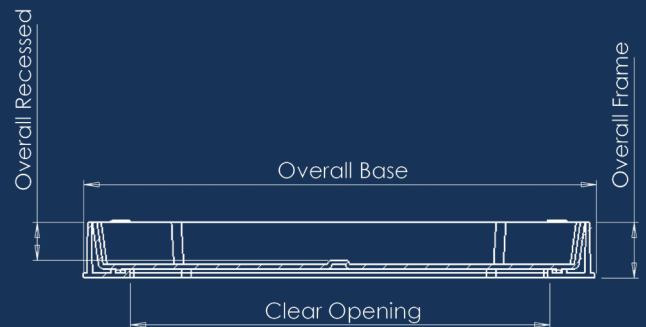
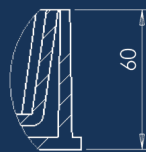
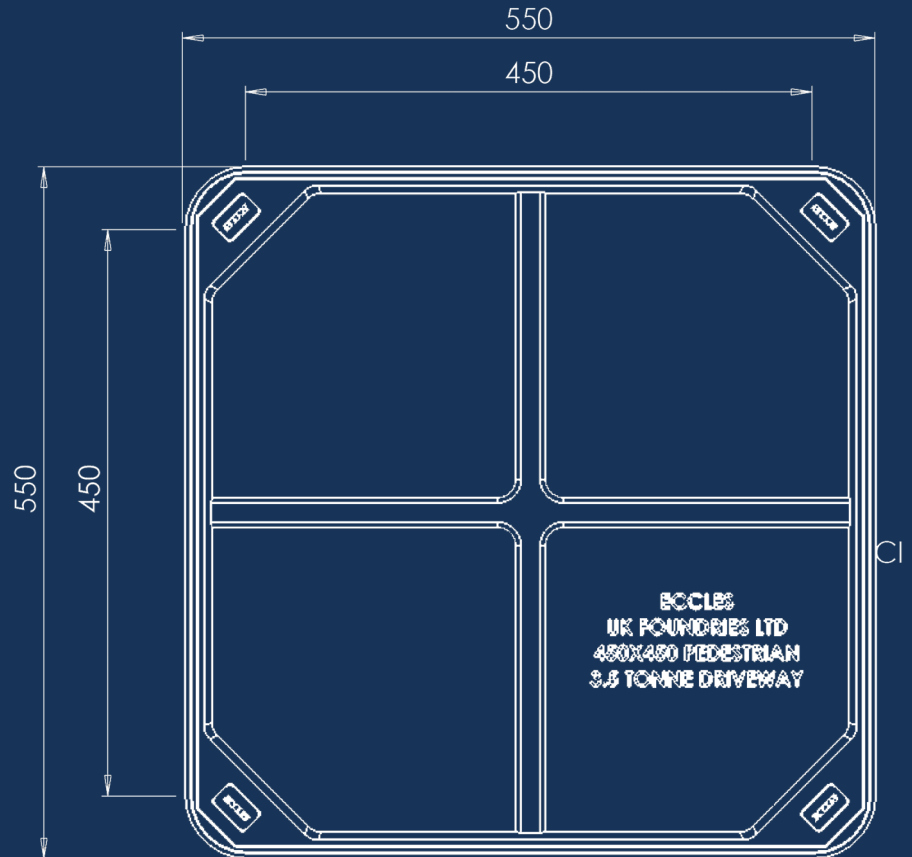
MicroTextured

#### Standard

Tested to EN124

#### Product Type

Composite Recessed Access Cover and Frame



- A** BASE SIZE
- B** CLEAR OPENING
- C** FRAME DEPTH

### DIAGRAM KEY

Disclaimer: Eccles (UK Foundries FE) Ltd are continually seeking to improve our products and we therefore reserve the right to alter product specifications without prior notice. It is the responsibility of all users to ensure that the above product data is current. Installation details are available on request. It is always recommended that the use of road plates be used where access covers, gully grates and frames are exposed to construction and site traffic during the construction phase of any project and in accordance with "Annex F" EN124-1:2015.