

DU1173

B125 (Group 2)

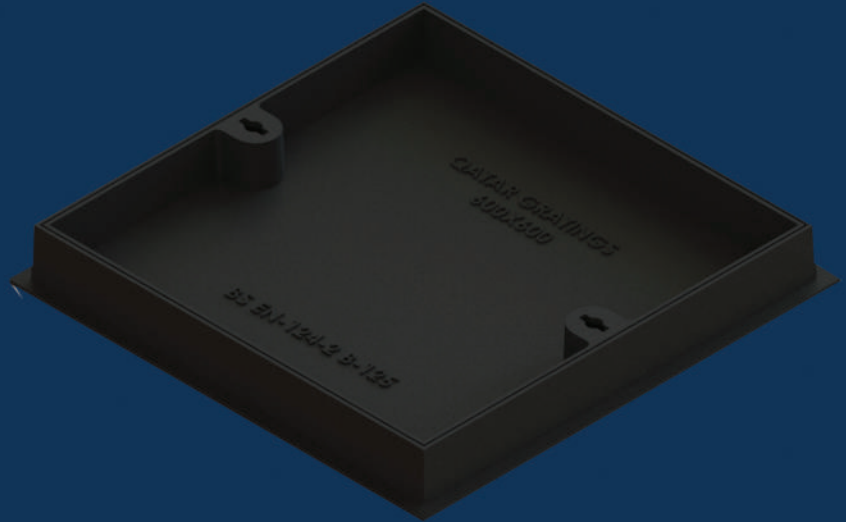
Recessed Access Cover

DU1173 600x600x84



Ductile iron access cover suitable for use in car parks and pedestrian areas where occasional vehicular access is likely. Capable of withstanding a 125kN (12.5 tonnes) test load.

EasySeal™
B125



OPTIONAL EXTRAS

- Rubber seal
- Badged
- Locked
- Vented

PRODUCT CODE	DU1173	BASE SIZE	760mm x 760mm
CLEAR OPENING	600mm x 600mm	DEPTH	84mm
		WEIGHT	56kg

FEATURES



KITEMARK

Exceeds the requirements of BS EN124-2:2015, tested and certified by BSI.



RATIO

Ductile iron for improved weight to strength ratio.



COATING

Black coated finish.



STRONG & DURABLE

Spheroidal graphite cast iron according to EN 1563:2018, as per the requirements of BS EN124-2:2015.



RECYCLABLE

Long life asset with high circularity contributing to the reduction in carbon footprint.



SINGLE SEAL

Designed and engineered for an easy seal, when packed with grease it provides an airtight seal.

DU1173

B125 (Group 2)

Recessed Access Cover

DU1173 600x600x84



Ductile iron access cover suitable for use in car parks and pedestrian areas where occasional vehicular access is likely. Capable of withstanding a 125kN (12.5 tonnes) test load.

EasySeal™
B125

DATA

Dimensions

A / Base Size: 760mm x 760mm

B / Clear Opening: 600mm x 600mm

C / Depth: 84mm

Materials

Ductile Iron

Finish

Black Coated

Certification

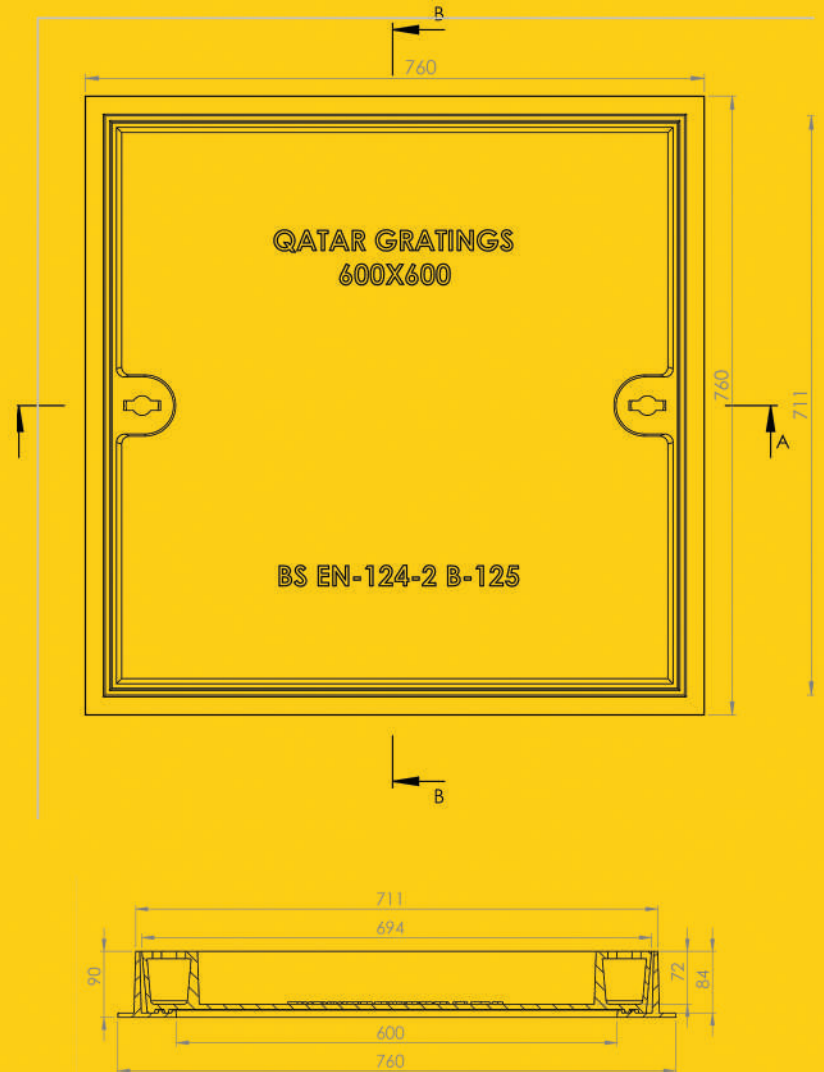
BSI Kitemark

Standard

EN124-2:2015

Product Type

Ductile Iron Access Cover



- A** BASE SIZE
- B** CLEAR OPENING
- C** FRAME DEPTH

DIAGRAM KEY

Disclaimer: Eccles (UK Foundries FE) Ltd are continually seeking to improve our products and we therefore reserve the right to alter product specifications without prior notice. It is the responsibility of all users to ensure that the above product data is current. Installation details are available on request. It is always recommended that the use of road plates be used where access covers, gully grates and frames are exposed to construction and site traffic during the construction phase of any project and in accordance with "Annex F" EN124-1:2015.