

# SB003

225X225X100

Grade A BS 5834-2

# MultiGrip™

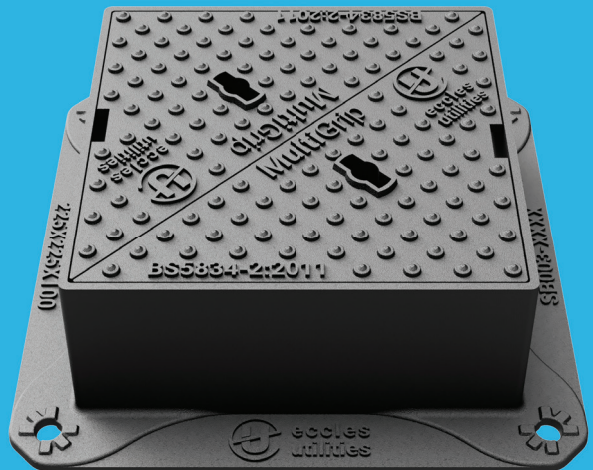
## Ductile Iron Surface Box ecclesutilities®



Capable of being used in carriageways and other areas carrying fast moving, normal commercial vehicles with wheel loads up to 5 tonnes and slow moving, specially authorised vehicles with wheel up to 11.5 tonnes.

## OPTIONAL EXTRAS:

- Badged



Product Code	Clear Opening	Base Size	Depth
SB003	225mm x 225mm	308mm x 308mm	100mm

\* Single Lid Wedge Seated

## FEATURES:



**SmartGrip Technology™** - Unique pattern design provides a PSRY value of > 70 (UKAS Accredited 3rd Party).



**Recyclable** - Long life asset with high circularity contributing to the reduction in carbon footprint.



**Indicator Coating Layer** - Black coated finished with optional yellow indicator coating.



**Ratio** - Ductile iron for improved weight to strength ratio.



**Mortar Level Indicator** - Shows when the minimum level of bedding mortar has enveloped the frame.



**Three Point Suspension** - Three point suspension for non rock stability.



**Strong & Durable** - Spheroidal graphite cast iron according to EN 1563:2018, as per the requirements of BS EN124:2:2015.



**QR Code Mobile Friendly** - Clear, easy-to-use QR Code to access installation instructions.



**Closed Keyway** - Prevents increase of dirt and debris debris into the services below.

**eccles®**  
Intelligent Access & Drainage Solutions™

+44 (0)1922 613 222  
enquiries@ecclesproducts.com  
www.ecclesproducts.com

Eccles (UK Foundries FE) Limited  
Portland Street, Walsall,  
West Midlands, WS2 8AA, UK

# SB003

225X225X100

Grade A BS 5834-2

# MultiGrip™

## Ductile Iron Surface Box



ecclesutilities®



Capable of being used in carriageways and other areas carrying fast moving, normal commercial vehicles with wheel loads up to 5 tonnes and slow moving, specially authorised vehicles with wheel up to 11.5 tonnes.

## DATA

### Dimensions

A/ Base Size: 308mm x 308mm

B/ Clear Opening: 225mmx225mm

C/ Depth: 100mm

### Materials

Ductile Iron

### Finish

Black Coated

### Certification

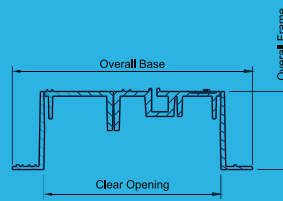
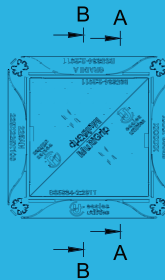
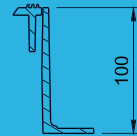
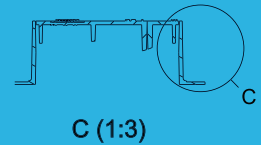
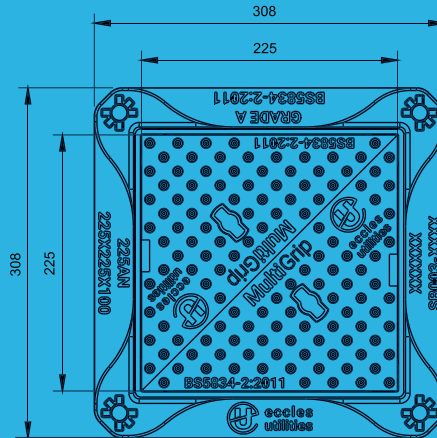
BSI Kitemark

### Standard

BS 5834-2

### Product Type

Ductile Iron Surface Box



A-A (1:3)

# SmartGrip™

Technology

**Disclaimer:** Eccles (UK Foundries FE) Ltd are continually seeking to improve our products and we therefore reserve the right to alter product specifications without prior notice. It is the responsibility of all users to ensure that the above product data is current. Installation details are available on request. It is always recommended that the use of road plates be used where access covers, gully grates and frames are exposed to construction and site traffic during the construction phase of any project and in accordance with "Annex F" EN124.1 :2015

- DIAGRAM KEY:**
- A** BASE SIZE
  - B** CLEAR OPENING
  - C** FRAME DEPTH

**eccles**®  
Intelligent Access & Drainage Solutions™

+44 (0)1922 613 222  
enquiries@ecclesproducts.com  
www.ecclesproducts.com

Eccles (UK Foundries FE) Limited  
Portland Street, Walsall,  
West Midlands, WS2 8AA, UK